



Ice-G brand  
Ceiling Mounted  
Falling Snow  
Machines  
Sold exclusively by  
Bucceri Snow USA



Transform any space into a winter wonderland with our ceiling-mounted falling snow machines. Create magical moments with realistic, gently falling snow, no matter the weather.

Step into a world of wonder. Our falling snow machines create an immersive winter experience, transporting you to a realm of ice and snow.



Unlimited possibilities! Our ceiling-mounted falling snow machines bring the magic of winter to any event or environment. Perfect for indoor or outdoor use, these all-weather machines create a breathtaking spectacle that can be used in an indoor ski resort, snow park, ice and snow sculpture hall, hot spring, shopping mall, street corner or family courtyard.



### **Bucceri Snow Making: The Leaders in Snowmaking Innovation**

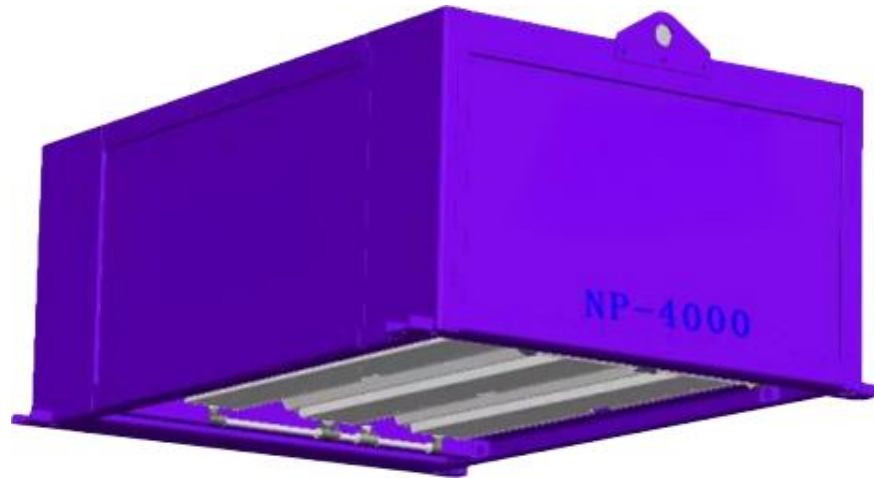
With decades of experience and a passion for innovation, Bucceri Snow Making is a global leader in snowmaking technology. We have provided our expertise to a wide range of clients, from major theme parks and ski resorts to private events and film productions. Our commitment to quality, reliability, and customer satisfaction has earned us a reputation as the trusted name in snowmaking.

# ABOUT US

## **Bucceri Snow Making: Your One-Stop Shop for Winter Magic**

Bucceri Snow Making offers a comprehensive range of services to meet all your snow-related needs. From snowmaking equipment rentals and installations to custom-designed snow experiences, we have the expertise and technology to transform any environment into a winter wonderland. Our services include:

- Snowmaking machine sales and rentals: Choose from a variety of high-quality snowmaking machines to suit your specific needs and budget.
- Professional installation and operation: Our experienced technicians will ensure your snowmaking equipment is set up and operated safely and efficiently.
- Custom snow design and effects: We can create unique snow experiences, from gentle snowfall to blizzard-like conditions, to enhance your event or attraction.
- Year-round snowmaking solutions: Our technology allows us to produce snow in any climate, ensuring a perfect winter experience, regardless of the weather.



The Bucceri/Ice G Falling Snow Machine can be provided as a single, double or triple roller design to provide the falling snow needed for your application.

The Machines are manufactured by Ice-G and sold by Bucceri Snow to compliment there own range of snow making machines and systems.

The NP Series Falling snow machines has the functions of automatic water inlet, water tank heating ,water pipe heating ,and is a professional falling snow equipment with adjustable snowflake size.

The water inlet, water tank heating, and water pipe heating are all automatically operated after the power is turned on.

The machines can be provided with a remote start and stop interface, which can centrally control the start and stop of each falling snow machine in the control room or remotely.



## Equipment product performance



### Product Performance

1

The falling snow machine is not restricted by temperature conditions and is not affected by indoor and outdoor factors. It can create real falling snow that drops from the ceiling all day long. It produces snow of the highest quality.

2

The amount of falling snow can be selected according to needs. Heavy snow, moderate snow and light snow can be adjusted at will. The switch can also be remotely controlled..

3

Low operating noise, strong and durable.

4

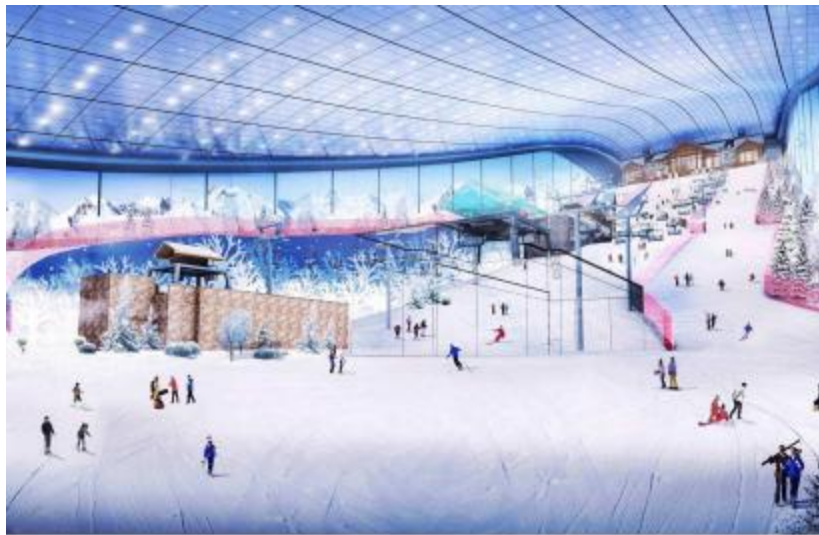
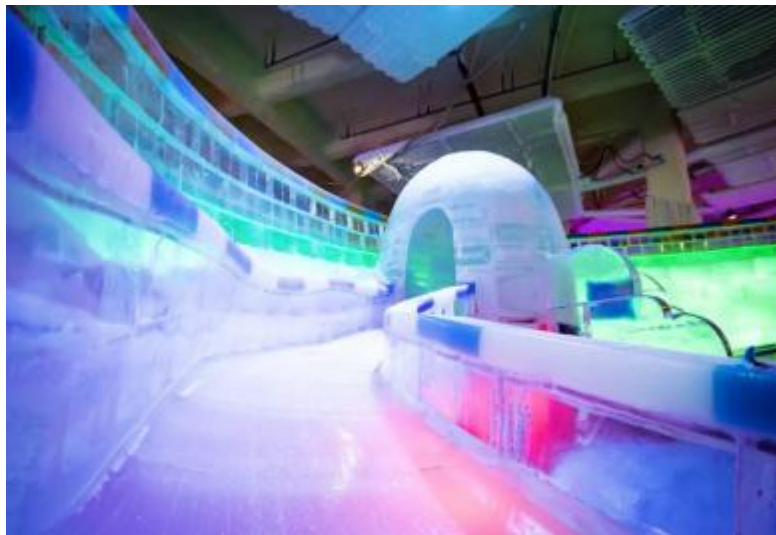
Split and single package design, compact size, ceiling installation, space saving.

5

Reliable performance, lower energy consumption

# Product Applications

The Ice-G Falling snow machine has a wide range of uses and it can be applied to indoor snow facilities, Indoor and outdoor snow play events, snow hot springs, snow-themed bars, cafes, high-end restaurants, hotels, hotel lobbies, SPA bathing centers, snow saunas, snow cabins, outdoor stores, and Christmas and New Year event venues, etc., The machines can be linked with multimedia lighting, music and other control protocols.



Bigger-IceG Snowfall Machine



Device application scenarios



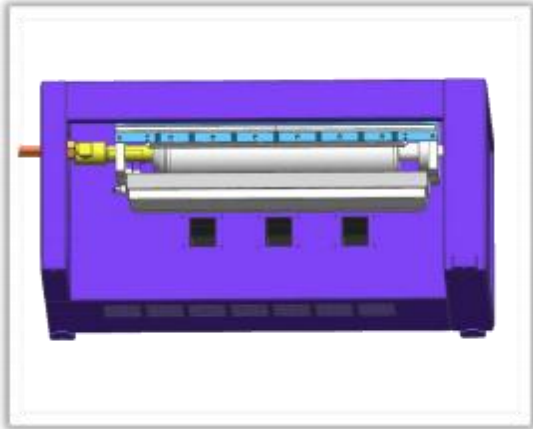
# Product overview

NP-1000

NP-2000

NP-3000

NP-2000



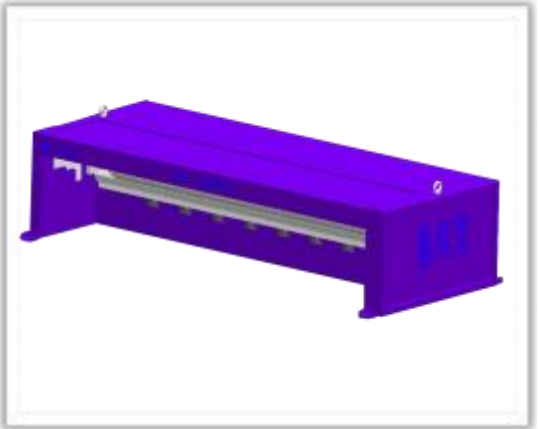
Single Roller



Double roller



Triple Roller



Single Roller

Basic Falling Snow Machine Design:

1. External unit: Refrigeration compressor and Condensing Unit.

Refrigeration compressors are divided into 3P, 5P, 10P, 15P, 25P, etc. according to power. Different refrigeration compressors are configured according to different models.

2. Indoor unit: Evaporator and falling snow production

Indoor units are divided into 3 types according to snow production capacity: NP-1000, NP-2000, and NP-4000.

3. Control cabinet part

The control cabinet mainly controls the switch of the indoor unit and outdoor unit, speed adjustment and other functions.

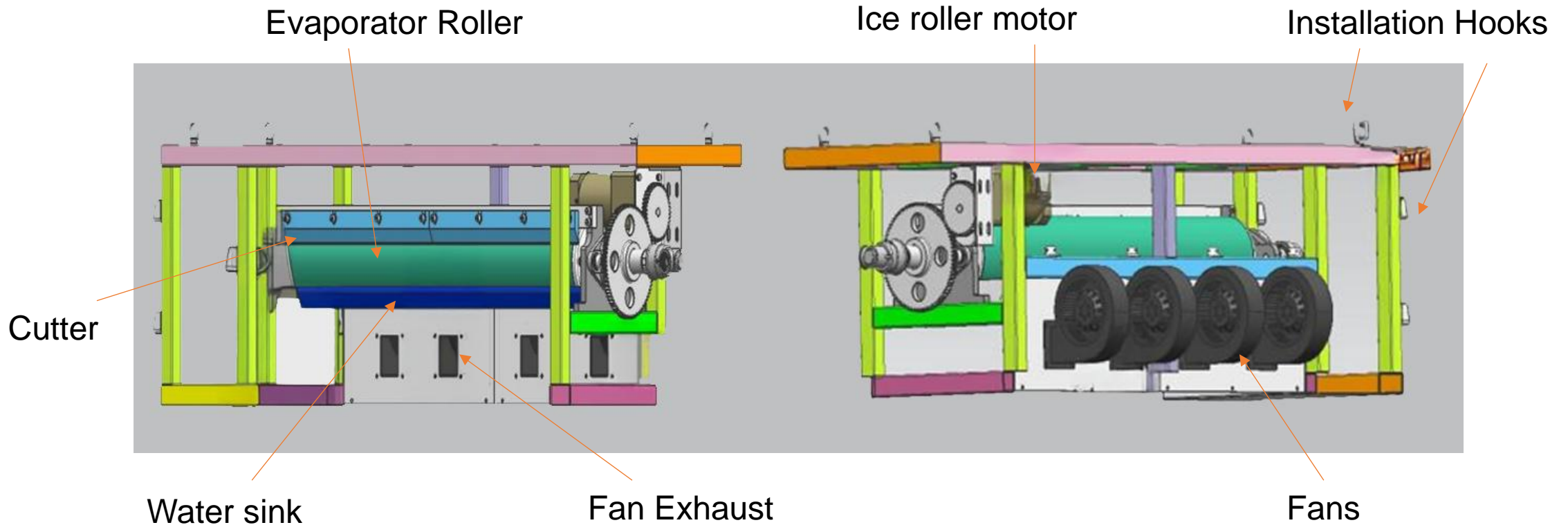
NP-1000 (single roller)			NP-2000 (double roller)		NP-2000 (single roller)	NP-4000 (triple roller)	Remarks
Number	Parameter	Details	Details	Details	Details	Details	Remarks
1	Whole machine						
1.1	MODEL	NP-1000	NP-2000-double	NP-2000-Single	NP-4000- Triple		
1.2	Snow production	1000 Kgs/Day	2000 KG/Day	2000 KG/Day	4000 KG/天		
1.3	Coverage	≥10m <sup>2</sup>	≥10m <sup>2</sup>	≥10m <sup>2</sup>	≥20m <sup>2</sup>		can be Increased by height
1.4	Power	4KW	7KW	7KW	18KW		
1.5	power supply	380V/50HZ	380V/50HZ	380V/50HZ	380V/50HZ		As required built to specifications
1.6	Installation height	As required	As required	As required	As required		recommended ≥4metres
1.7	Refrigerant	R404a	R404a	R404a	R404a		or as requested
1.8	Management						Computer automatic control
2	External unit - outdoor unit oart						
2.1	Compressor	3p	5p	5p	15P		Brand Sekowei/Emerson
2.2	Fan air volume	3000m <sup>3</sup> /h	2x3400m <sup>3</sup> /h	2x3400m <sup>3</sup> /h	2x6500m <sup>3</sup> /h		
2.3	Cooling area	35m <sup>2</sup>	66m <sup>2</sup>	66m <sup>2</sup>	130m <sup>2</sup>		
2.4	Fan power	140w	2x180w	2x180w	2 by 414w		
2.5	Nominal cooling capacity	5140w	21800W	21800W	42900w		
2.6	Voltage	380V/50HZ	380V/50HZ	380V/50HZ	380V/50HZ		As required on request
2.7	Dimensions	950*380*860	1200*750*1000mm	1200*750*1000mm	1500*900*1400mm		
2.8	interface	9.52/15.88	9.52/15.88	9.52/15.88	9.52/15.88		
2.11	Weight	200kgs	220kg	220kg	350kg		
3	Internal unit						
3.1	Ice roller assembly	460mm Ice Roller	2 by 600mm roller	1 by 1500mm roller	3 by 1000mm roller		Stainless steel
3.2	Cutter assembly						Stainless steel
3.3	heating						Automatic Control
3.4	Water supply system						Manual/automatic control
3.5	Blowing system						Adjustable air volume
3.6	Ice roller drive assembly						Frequency adjustable
3.7	Hoisting part						One for use and one for backup (adjustable level)
3.8	Sprocket chain						Sudden Fire Brand
3.9	Dimensions	1100*890*500	1150* 1300*650	2000*890*500	1750*1200*720mm		Internal unit
3.11	weight	200kg	240kg	240kg	520kg		Internal unit part
4	Electronic control part						Durable, low failure rate
4.1	PLC	Siemens	Siemens	Siemens	Siemens		Durable, low failure rate, precise control
4.2	Frequency Converter	Schneider/Bohui	Schneider/Bohui	Schneider/Bohui	Schneider/Bohui		Durable, low failure rate
4.3	Electrical appliances	Schneider + Delixi	Schneider + Delixi	Schneider + Delixi	Schneider + Delixi		Durable, low failure rate
4.4	Button	Siemens	Siemens	Siemens	Siemens		
4.5	How to operate						Manual/Automatic/485 communication

## 2. Indoor unit part:

Indoor unit part:

Indoor units are divided into 3 types according to the amount of snow produced: NP-1000, NP-2000, and NP-4000.

Indoor unit structure: The indoor unit consists of five parts: ice roller, water tank, cutter, fan, and ice roller motor; the structure is as shown below:



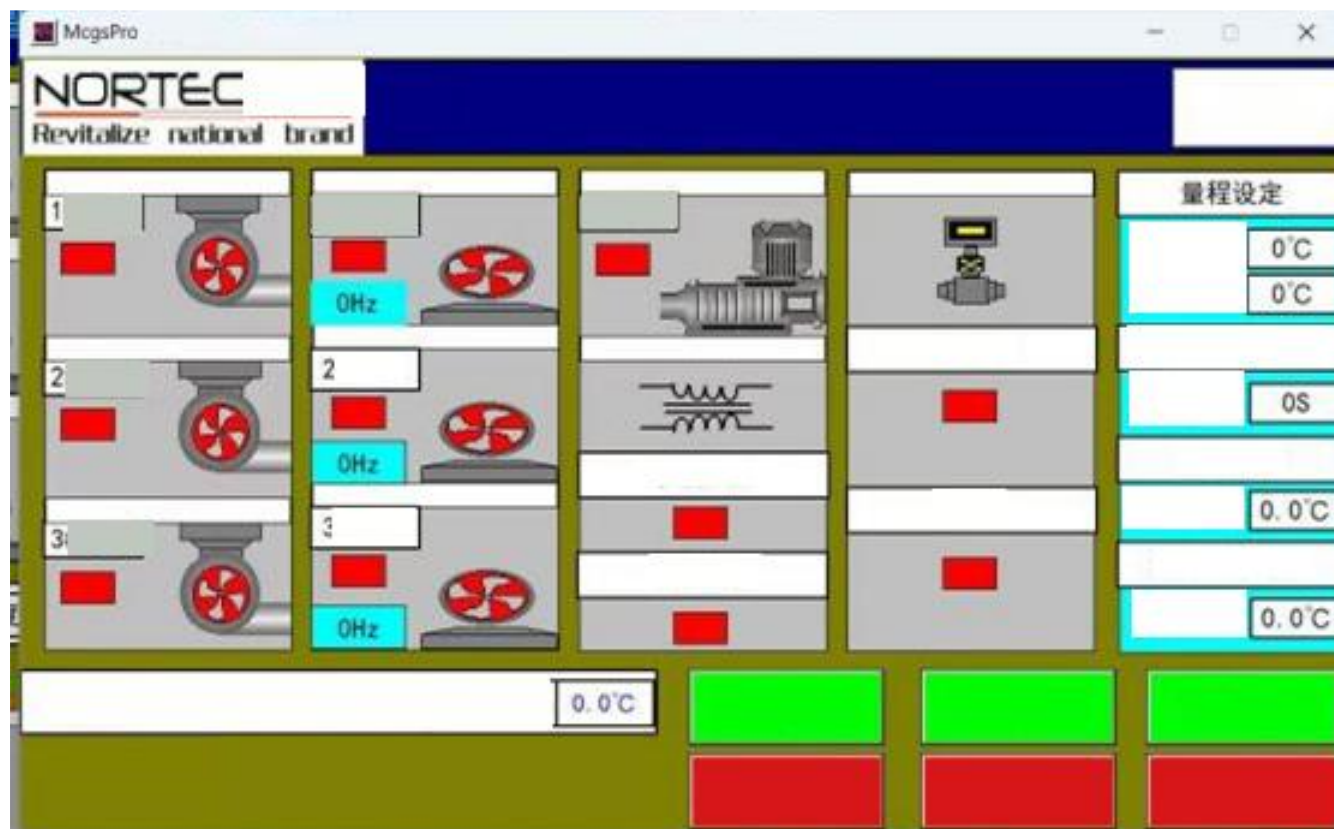
### 三、 Control cabinet part :

#### 3. Control cabinet part :

The control cabinet is divided into single control and double control (select according to the customer's use environment)

The control cabinet is divided into two operating modes: manual/automatic

The Schneider inverter is installed, the speed is adjustable, stable and energy-saving.



Snow density of the falling snow machine is 200-300kg/m<sup>3</sup> as it falls from the machine (if the ambient temperature varies then the snow density also changes)

### Requirements at the Customer site conditions:

- Water source: tap or pressurized water)
- Power: 3 phase power
- Outdoor condensing unit, to be positioned in ambient air source and preference is given to placement in a waterproof and ventilated and ventilated area.

Requirements for placement of distribution cabinet: waterproof and accessible location.

## Falling Snow Machine Extended Information

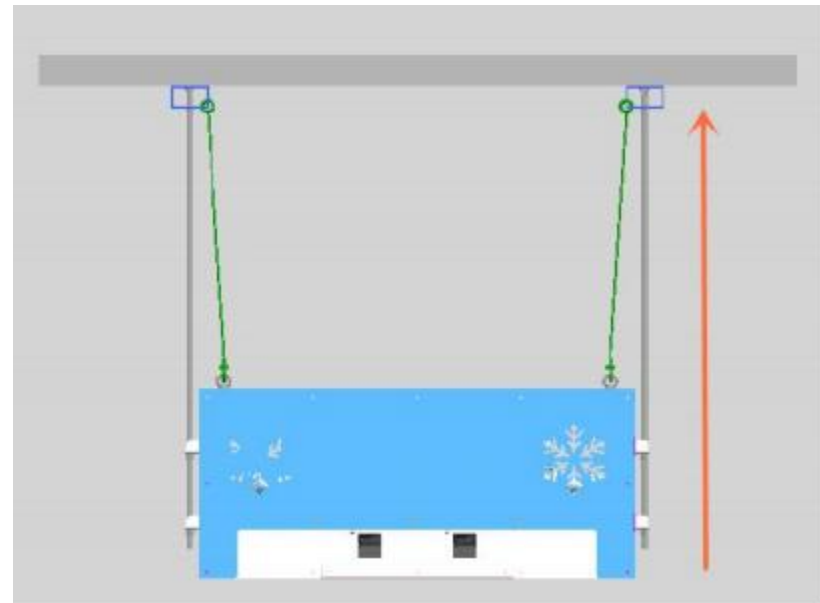
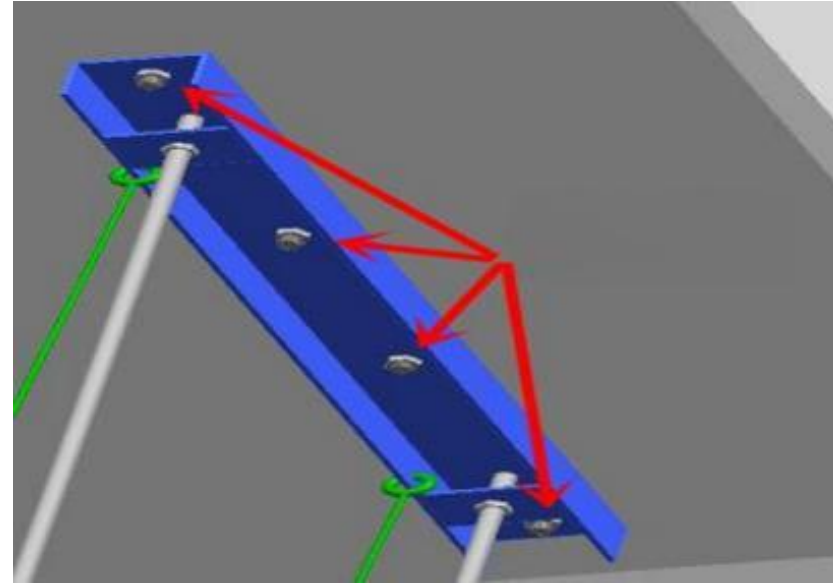
### Step 1

According to the calculated equipment size, install first and then hang the points, and fix them on the concrete or steel structure with M14 expansion screws;

### Step 2

Use electric lifting equipment or manual lifting equipment to lift the indoor unit to the pre-installation height

Please Note: that the installation must be carried out by a professional installer and the roof must be able to support the load and an engineer should be engaged to assure correct installation and roof support!





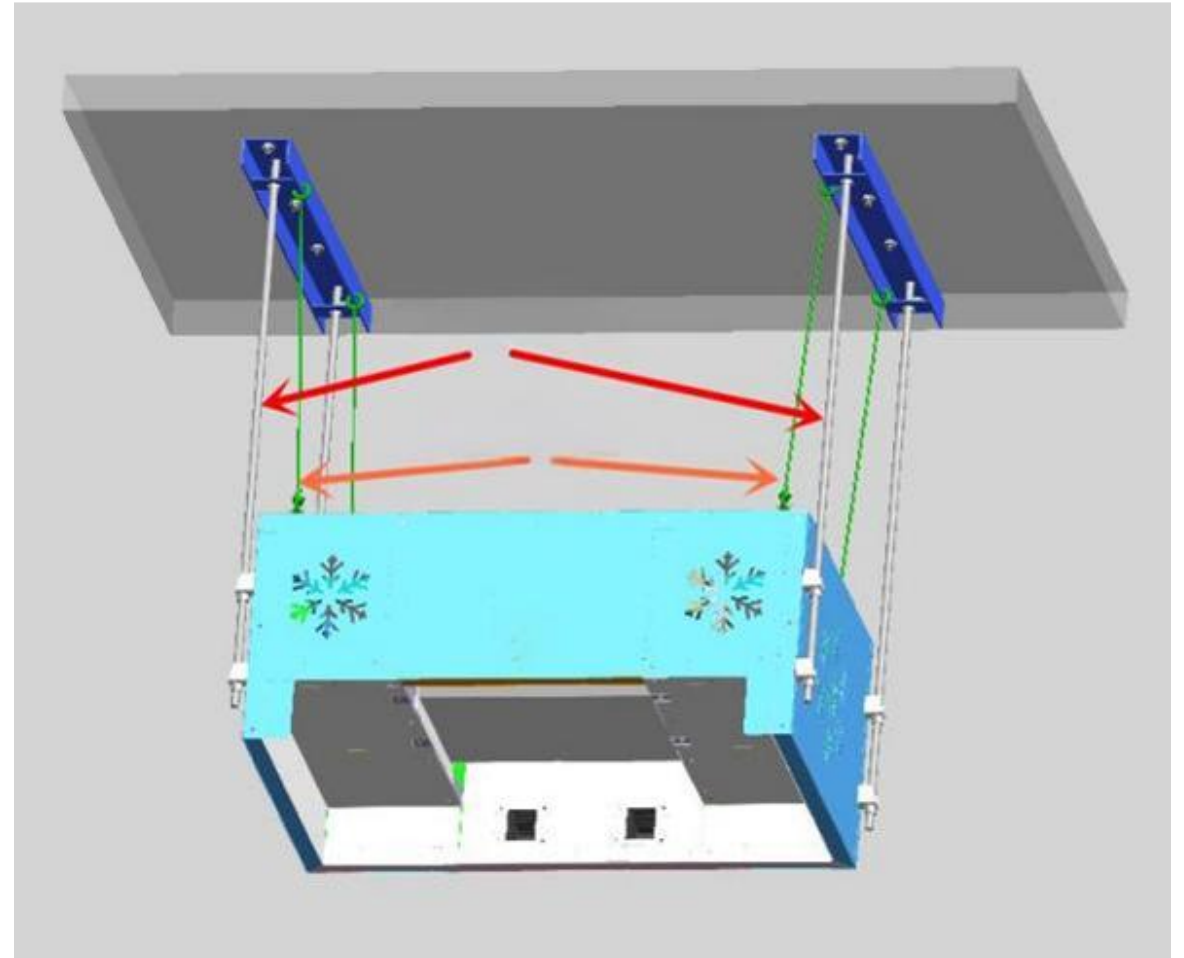
## Falling Snow Machine Extended Information

### Step 3

According to the calculated equipment size, pre-install the lifting bearing structure (stainless steel screw or stainless-steel wire rope) on the top structure. The bearing structure specification is  $\Phi 14$  mm. The unit must be hung level.

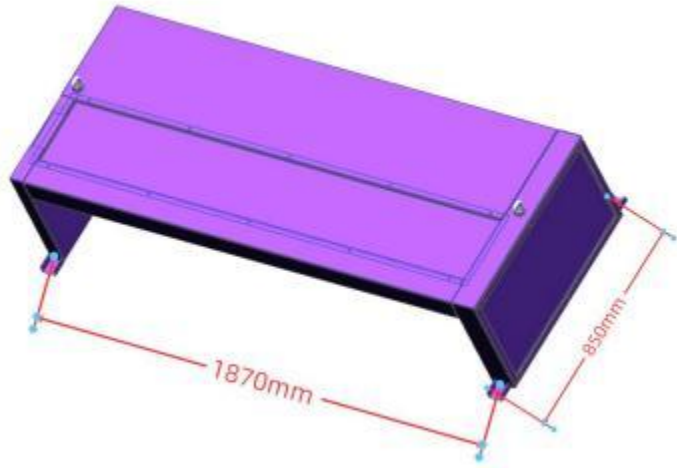
### Step 4

The screw rod passes through the fixed space, with a locking nut on the top of the space, a washer on the bottom of the screw rod, and two load-bearing nuts.

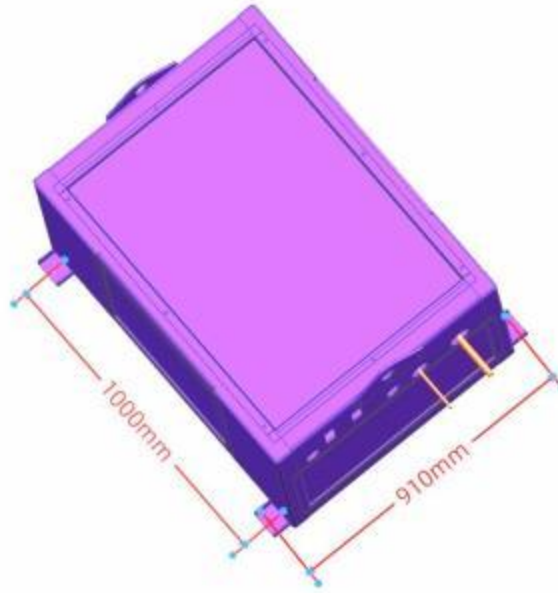


Ceiling dimensions for various models

**NP-2000** Single




**NP-2000** Double



**NP-4000**



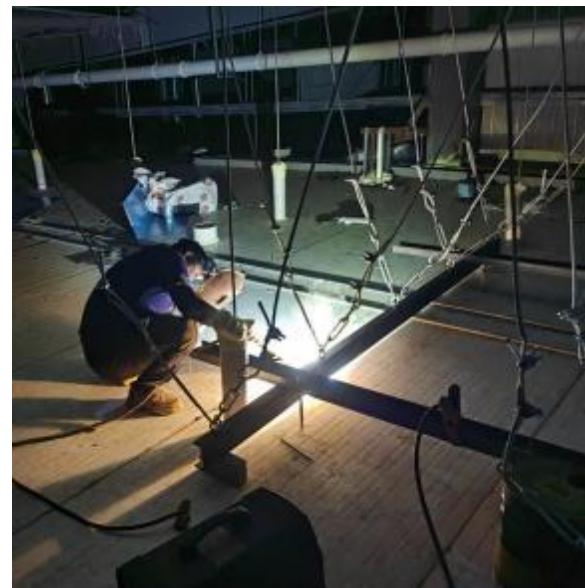
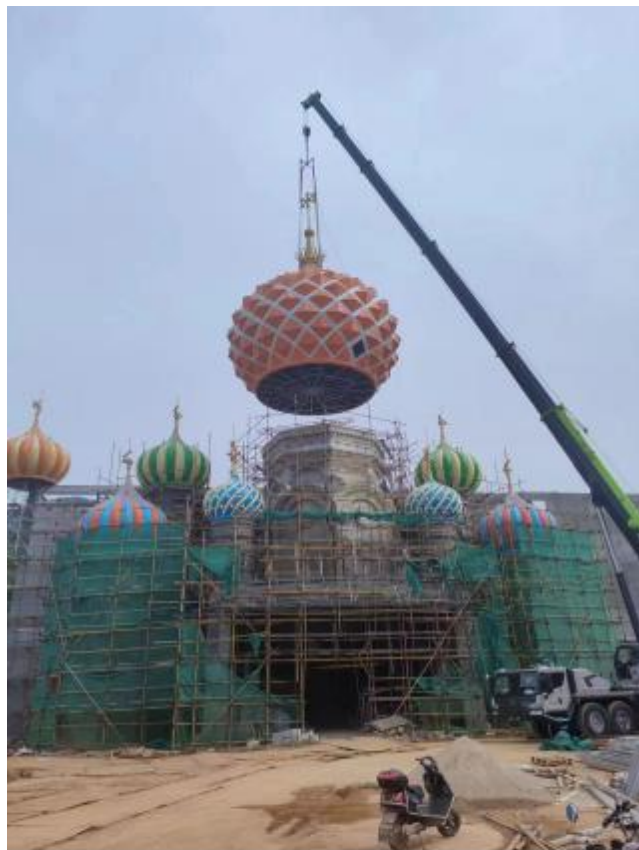


# Ice-G Case Studies Falling Snow Machines

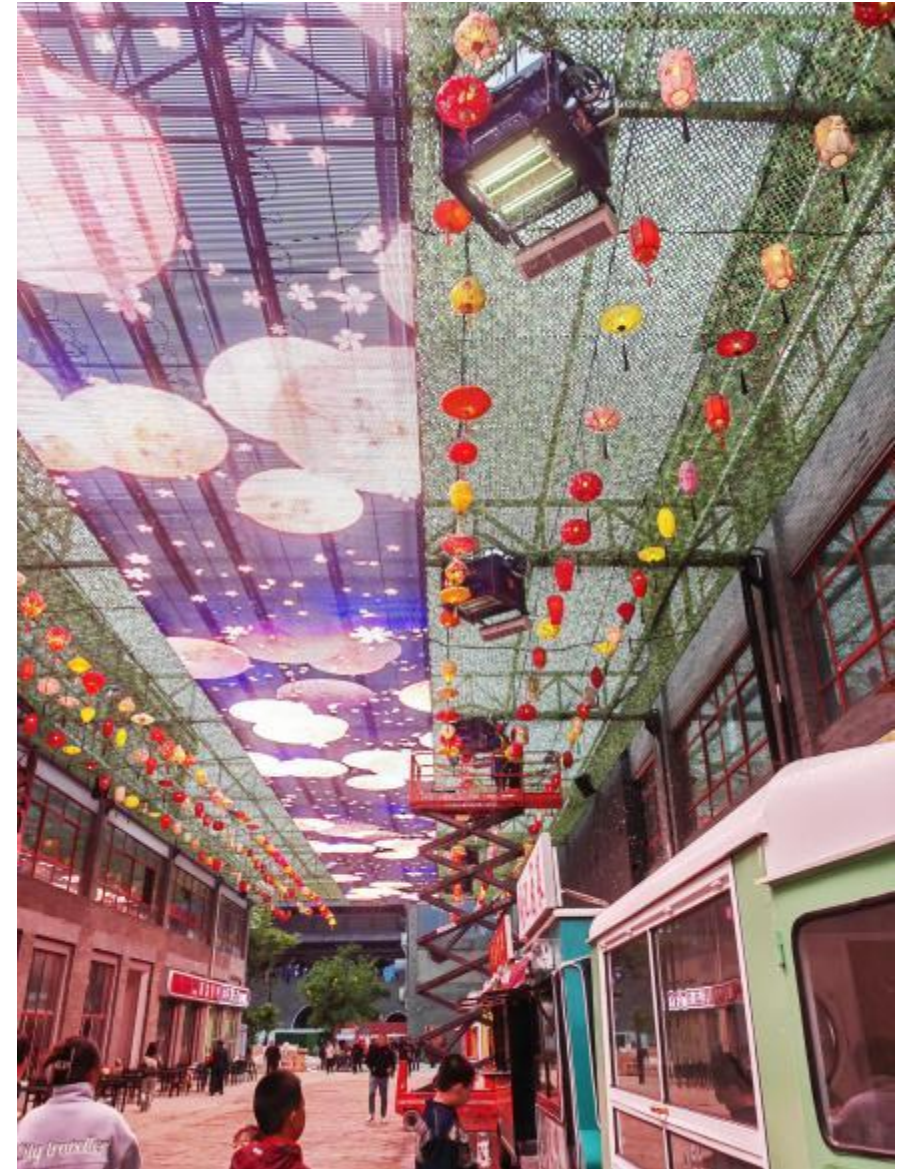
---



# Construction Site



# Construction Site



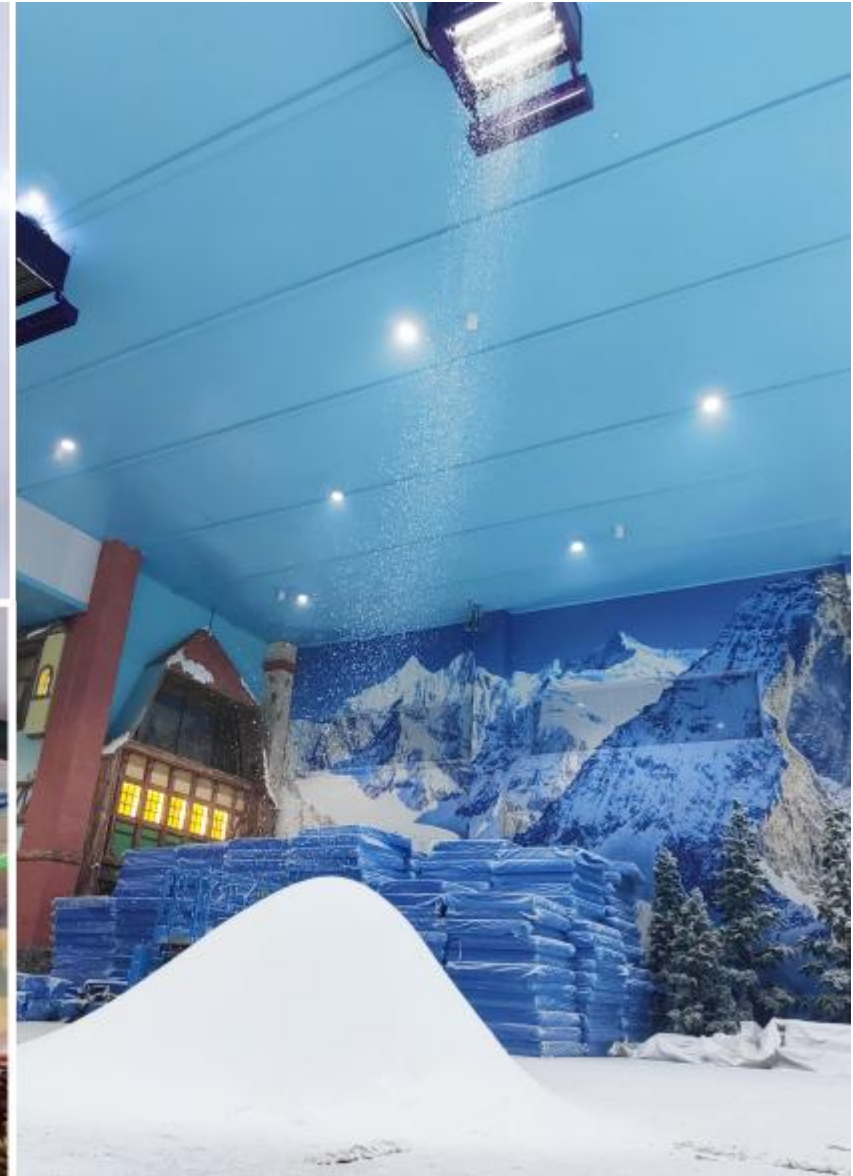
## Construction site (outdoor)



# Snow Show



# Snow Show





# Snow Show



# Snowfall display

Summer outdoor ice and snow  
fantasy city

